

KeyShowX Quick Help

Version 3.0

OVERVIEW

1. What is KeyShowX

KeyShowX is a software solution which allows you to control over the network multiple PowerPoint or Keynote presentations running on multiple PCs and Macs with precise sync. You can remotely launch PowerPoint / Keynote simultaneously on all PCs / Macs or individually, load and start slideshows, control navigation between slides. There is no real limit on how many presentations you can control at the same time – it can be only two or several hundreds. Unlike other multi-screen presentations tools, with KeyShowX the cost of controlling one, tens or hundreds of presentations stays the same.

i In the simplest setup when controller PC / Mac and controllable PCs / Macs with PowerPoint / Keynote are located in the same subnet, KeyShowX does not require any special network configuration as it uses UDP broadcasting feature of your local network.

2. How to setup

i Windows 10

Both **KeyShowX Node** and **KeyShowX PowerPoint Controller** apps are available at Microsoft Store. **KeyShowX Node** is free and doesn't require Microsoft account to be installed on as many Windows 10 PCs as you wish. **KeyShowX PowerPoint Controller** is a paid app with one day feature-unlimited trial.

macOS

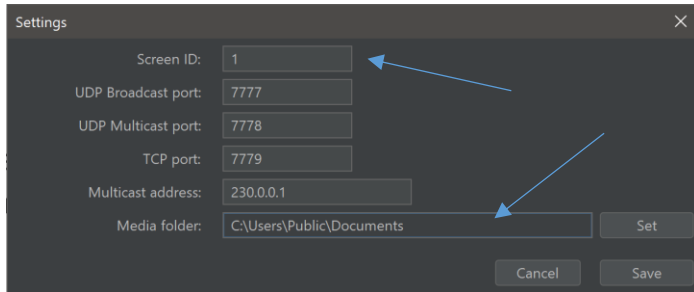
All apps are available for direct download from KeyWebX, signed and Apple notarized: The free **KeyShowX Node**, unlimited trials for **KeyShowX PowerPoint** controller and **KeyShowX Keynote** controller. You can order time-limited enterprise license (with unlimited installations of all controllers) from [KeyShowX page](#).

Make sure to accept all macOS security warnings when using KeyShowX Node and receiving first few commands. You will receive warnings from firewall, System Events, Keynote and PowerPoint. KeyShowX uses networking for communications and Apple / System Events for controlling other apps.

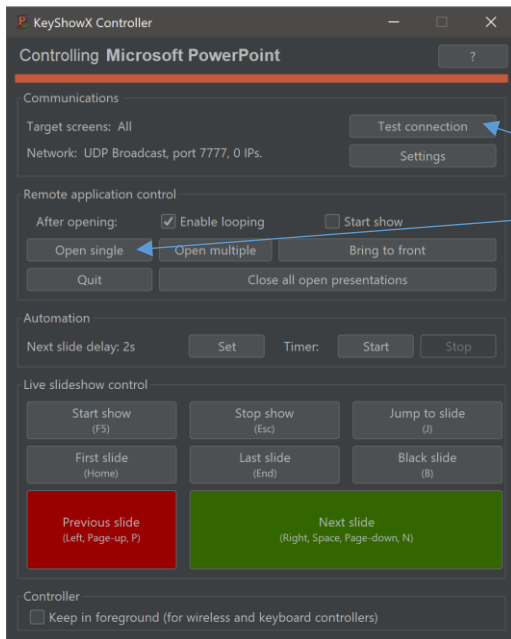
KeyShowX consists of two parts **KeyShowX** controllers (for PowerPoint and Keynote) and **KeyShowX Node**:



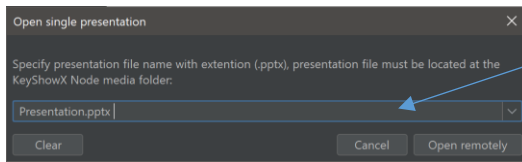
The free KeyShowX Node app should be installed and started on all PCs / Macs with PowerPoint / Keynote which you intend to control remotely. It is good idea to configure your Windows 10 / macOS for launching KeyShowX Node automatically on startup (instructions for [Windows 10](#) or [macOS](#)). By default, KeyShowX Node considers your Documents folder as a media folder where your presentations are located. This location can be changed later in Settings. Copy PowerPoint or Keynote presentations you intend to control to that location. If you are planning to control presentations individually, use Settings for assigning different numerical Screen IDs to different KeyShowX Node installations. In this case, you will be able to target individual KeyShowX Node by its Screen ID number from a controlling app.



Designate another PC or Mac as your controller, install commercial KeyShowX controller apps, KeyShowX PowerPoint Controller or KeyShowX Keynote Controller, and use them for controlling PCs / Macs with KeyShowX Node apps and PowerPoint / Keynote. In order to test if your network allows smooth communication between Controller and Nodes apps, use **Test connection** button. All PCs / Macs with running KeyShowX Node apps should display a notification window with Screen ID.



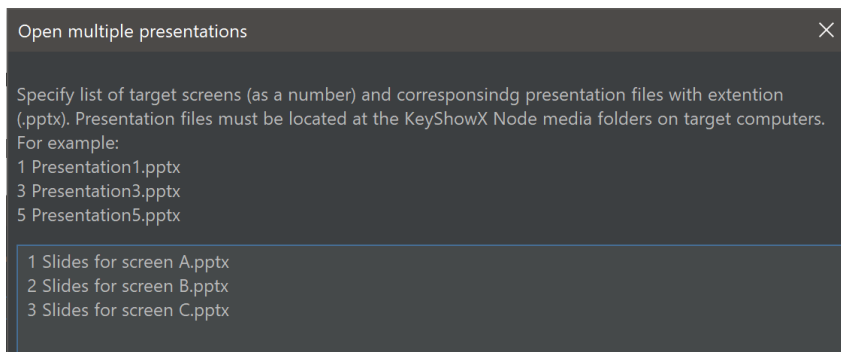
Use Open Single button to start remotely PowerPoint / Keynote and open specified presentation file on all PCs / Macs with running KeyShowX Node. You should specify only the file name without a folder. File should be located in configured KeyShowX Node media folders (by default Documents folder) of all PCs / Macs:



You can enable automatic presentation looping, or automatic start of slideshows while opening presentations.

3. Opening different presentations simultaneously

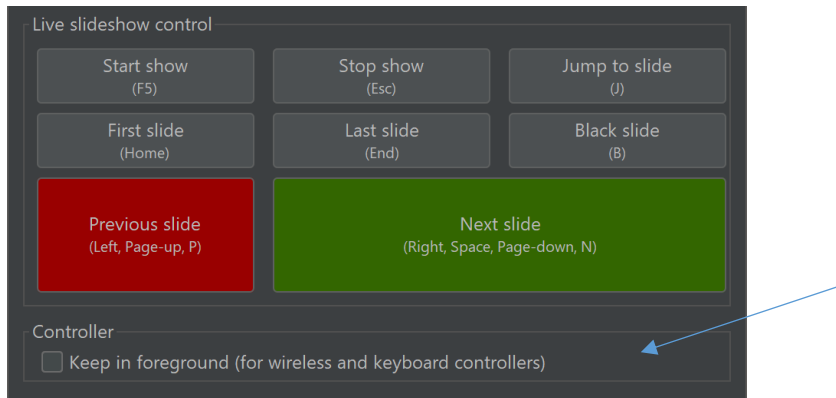
By default, KeyShowX controllers targets all Screen IDs meaning that all commands will be received and processed by all KeyShowX Node apps. However, sometimes you want to open different presentation files on different PCs / Macs and control them together. Use Open Multiple button and specify file names with preceding Screen ID number (each file name should be on a separate line). For example:



Screen IDs should not be repeated and should not contain 0 (all screens) as you cannot open different presentations on the same screen simultaneously. Screen IDs specified in this dialog always override Target screen settings of the controller.

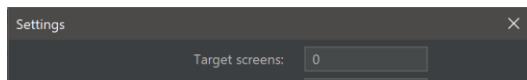
4. Using wireless controller or a keyboard

KeyShowX controllers features common keyboard shortcuts assigned to slideshow controlling buttons. You can use your keyboard or a wireless controller (like Logitech Wireless Presentation Remote) with KeyShowX just like you would control PowerPoint / Keynote directly. You can also configure it to be in a foreground in order to be available for a keyboard or a wireless remote all the time and prevent accidental application focus changes:

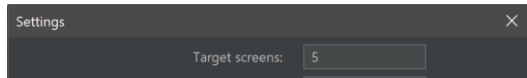


5. Targeting specific presentation PCs / Macs

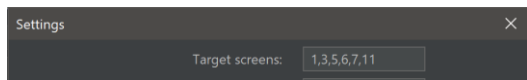
By default, KeyShowX controllers targeting all KeyShowX Nodes, regardless of their Screen IDs. In the Settings it is reflected as 0:



You can configure controller to target nodes with a specific Screen ID:



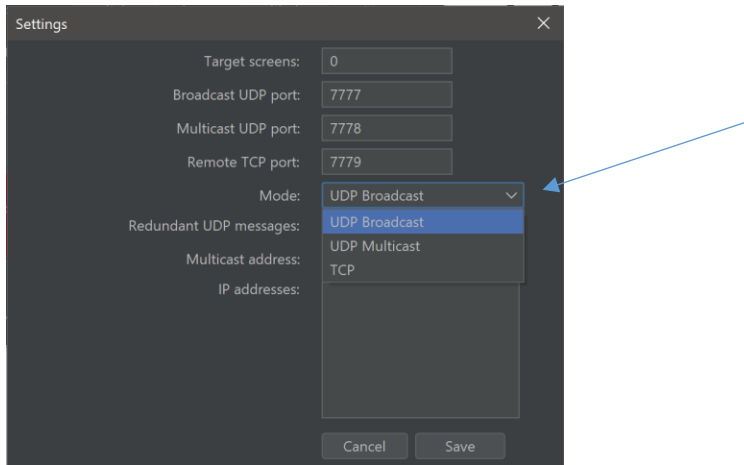
Or a list of specific Screen IDs separated by comma:



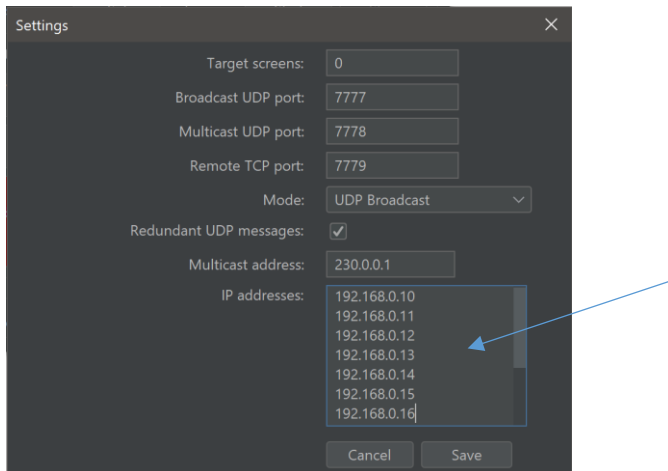
This is useful when you have multiple controllers in the same network where each controller targets their own range of PCs / Macs with installed KeyShowX Node.

6. Advanced network configuration

KeyShowX controllers can use UDP broadcasting, UDP multicasting or TCP for communication with presentation PCs / Macs. KeyShowX Node supports all three communication modes at the same time on different ports and does not require explicit reconfiguration for selecting different modes. However, on KeyShowX controller the mode must be selected explicitly:



Both UDP modes do not require specifying IP addresses of presentation PCs / Macs with KeyShowX Node if all computers are located in the same subnet. However, if you would like to add presentation PCs / Macs located at different network, you should specify them explicitly, one IP address per line:



Specifying IP addresses of all presentation PCs / Macs is also a mandatory requirement for TCP mode.

i For professional production shows it is highly recommended to use dedicated private network configured specifically for KeyShowX. Since UDP is not a reliable protocol, in public or generally overloaded networks you might experience significant UDP packets loss. KeyShowX does feature redundant UDP messages as a mitigation strategy, however it might not be enough. Dedicated network will help improving reliability of communications.

Sometimes even with dedicated network the wireless spectrum might be just too busy for a reliable Wi-Fi setup, which is very typical case for movies and television productions (yes, KeyShowX was used on many very well-known movies and TV shows 😊). In this case, the recommended approach is to use wired network.

TCP mode will provide ultimate reliability in both wired or wireless setups; however, it requires dedicated static IP address for all presentation PCs / Macs and configuring KeyShowX controllers for targeting those IP addresses explicitly. It is not a problem, but decreases flexibility and requires knowledge of network configurations. With TCP mode you might notice also delay with very large number of controllable PCs.